



SO36 Sound System Specs

Version Oct 10th 2017

All previous versions cease to be valid!

Our PA ist limited to 113,9 dB(CFTeq)/99dB(A) at FOH mix position!
No access to limiter/controller settings can be granted (despite of delay times)

FOH:

Avid Venue Mix Rack System

-Profile Digital Console

-FOH Mix Rack:

48 CH analog XLR mic/line inputs

16 CH analog XLR outputs

8 GPI/O (TRS)

3 DSP Mix Engine Cards

D-Show software 3.0

Venue Pack Pro 3.1. Ask for list of additional PlugIns (SPL, Waves, BX...!)

On request: 64 CH HD Native Recording (24 Bit, 48kHz)

Digital Audioworkstation i7 Windows 7 with Pro Tools HD10.

Ask for recording options and prices!

Power Supply FOH: 16A CEE Red 3L+N+PE 6h, alt. CEE 7/4 Type F („Schuko“)

Denon 501C Media Player (CD, MP3, USB, iPhone)

Siderack:

1 Klark DN360 GEQ (Master L/R)

1 TC D-Two Tap Delay with Footcontroller

Yamaha SPX 990 Multi FX

Intercom: 1x Axxent CP-100 Mainstation, 2x BP-100 Beltpack, 2x D-800 Headset,
2x LP100 Call Signal Light

Stagebox/Multicore:

Stagebox 1:1+1 Split 40 CH

MC 2x20 CH sym., Return MC 12 CH, 2nd Return MC 8CH

PA:

Total Output Power 11.690 W , 3-way active system + Center, Nearfills, Delayline

XTA DP448 SystemController (Main PA, Delay)

XTA DP446 (Nearfills, Sidefills)

High/Mid:

2x GAE Director Series, 222T-A

2x12" 700W/8Ω, 1x1,5" 120W/8Ω (IEC), 60x40° CD

Amping: RAM S1500 (High), RAM W9000 (Mid)

Sub:

4x GAE ATUE 152, 2x 15", 1400W/4Ω each. Amping: RAM W12044

2x GAE BR215, 2x15", 1400W/4Ω each. Amping: QSC RMX 5050

**Center:**

1x GAE System12TM 12"/2", 60° radial, 350W (IEC) /8Ω. Amping: RAM S4004-DSP

Nearfills:

2x GAE 121T 12"/2" 350W/8Ω, 90x75°, Amping: QSC MX1500a

Delays:

2x GAE PS152TM 15"/1,4", 350W each. 60° radial. Amping: RAM S4000.

Monitoring:

Yamaha M7CL-32

32 Mono Inputs, 4 Stereo Inputs, 16 Mix Busses

Sidfills:

GAE System 15TM 15"/2" 60° radial -N/Dym 400W (IEC) / 8Ω + BR115p-4, 15" 700W (IEC) 4Ω each. Amping: RAM W9000

Drumfill:

GAE 4475M/L 1050W (IEC) + GAE 4475M Amping: QSC MX3000a

Wedges: 11x GAE 4475M 350W (IEC)

1 Cue Wedge GAE 4475M

All in all: 12 Wedges (including Cue Wedge, Drumfill top, DJ Monitor if needed)

10 CH Amping QSC MX3000, 2 CH QSC EX2500

Power Supply Stage: 16A CEE Red 3L+N+PE 6h, alt. CEE 7/4 Type F („Schuko“)

Mic's:

1 AKG D112

1 Audio-Technica ATM 25

3 Audio Technica ATM 450 condenser

3 Audio-Technica ATPRO37 condenser

1 Audix D6

1 Sennheiser e901 PZM

2 Sennheiser e609

5 Sennheiser e604 Clip

1 Sennheiser MD 421

1 Shure Beta 52

8 Shure SM58

7 Shure SM57

2 Shure Beta57A

2 Shure Beta 58A

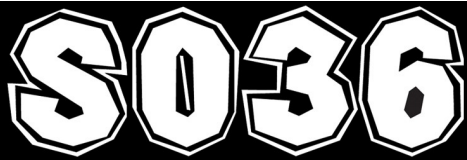
2 Shure ULX S4 /R4, with ULX2/Beta87A/R4 784.000-820.000 Hz

2 Shure QLX-D24E/B87A-G51 470-534.000Hz

2 Shure QLX-D1-G51 Beltpack 470-534.000Hz

2 Shure MX153 headset

Microphone Stands etc.: 13x tall boom, 5x short boom, 3x Straight, 2 Z-bars, var. claws



DI's:

6x BSS AR-133 active
2x Palmer PAN 02 active
5x Palmer PAN 01 passive
1x Palmer PLI 04 Pro Media DI

DJ:

1x Pioneer DJM850 DJ-Mixer (USB connection)
1x Pioneer DJM800 DJ-Mixer
2x Pioneer CDJ 850 CD-Player (Disc: Music CD, Disc/USB: Mp3, AAC, WAV, AIFF)
2x Pioneer CDJ 200 CD-Player (Disc: Music CD, Mp3, no USB!)
2x Pioneer CDJ 100s CD-Player
4x Technics Turntable SL1210 MK2



Lighting:

Stage

Backtruss:

12 x PAR 64, CP 87 (0,5 kW), black
6 x High End Systems Studio Spot 575 (24CH)
6 x Martin MAC AURA (25CH)
1 x Martin ATOMIC 3000 Strobe (4CH)
4 x Moles 2Light, Audience Blinder

Midtruss:

6 x PAR 64, CP 87 (0,5 kW), black
2 x A C L Circuits PAR 64, black

Floor:

6 x PAR 64, CP 87, ShortNose Floorspot (0,5 kW), black
2 x Moles 4Light, Audience Blinder
6 x Litecraft AT10 (8CH)
2 x Martin ATOMIC 3000 Strobe (4CH)

1 x BASE HAZE 1,5kW/ Haze -Machine
1 x Antari F1500 / Smoke Machine

Fronttruss:

4 x STRAND Cantata F, Fresnel (1 kW)
2 x STRAND Cantata PC (1 kW)
5 x STRAND Cadenza 18/32, PC (1 kW)
4 x LED PAR RGB Eurolite (5CH)
4 x LED PAR CW Eurolite (4CH)

Amping:

8 x CAMCO Digital Dimmer 12 x 2,3 kW

Desk:

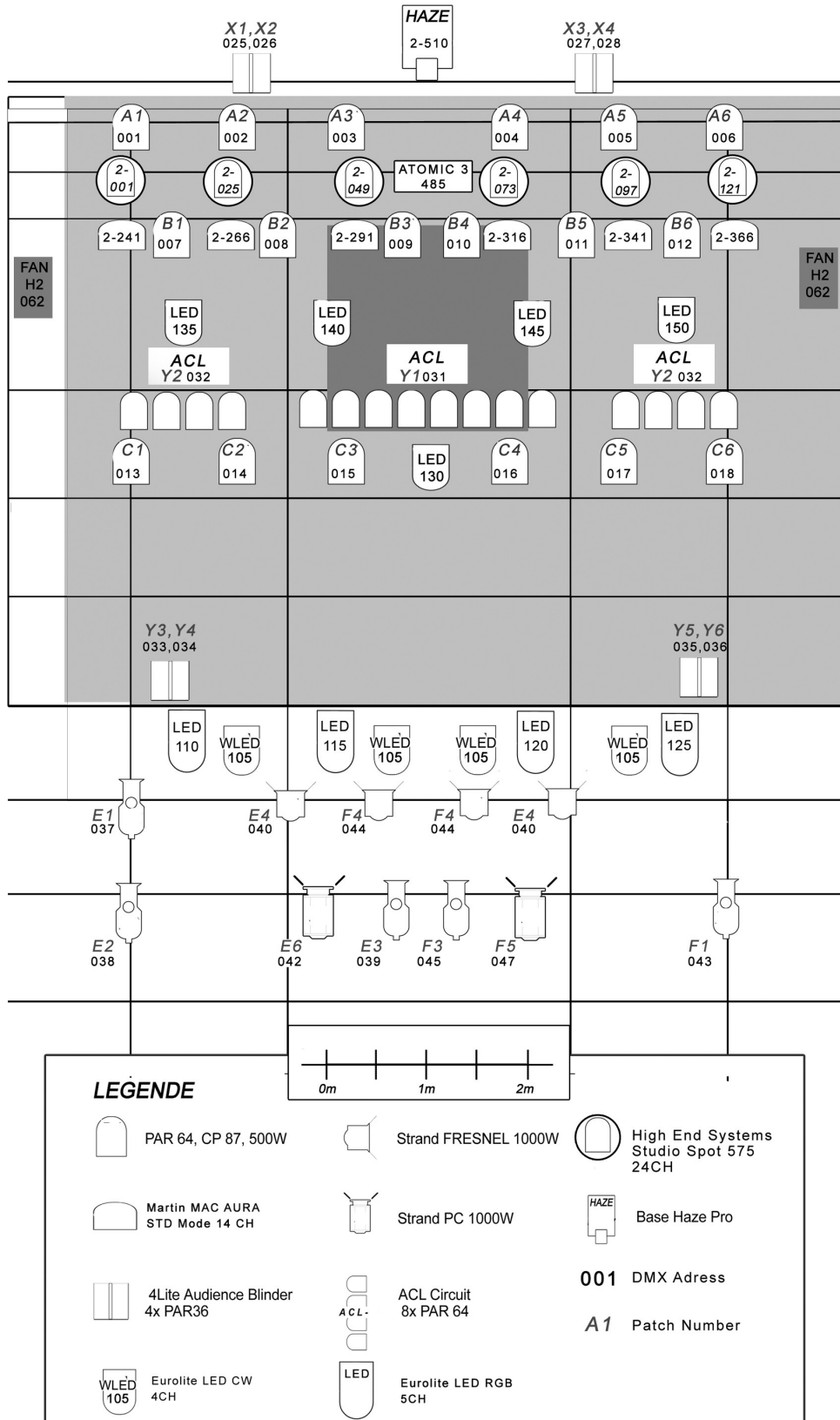
Chamsys MagicQ mq70 + MagicQ Extra Wing

ONLY ON REQUEST: Additional Power Supply for Guest Floorsets 63A

SO36

VENUE AND TECH SPECS

SO36 LIGHTPLOT 05/17 CHRIS@SO36.DE



SO36
ORANIENSTR 190
10999 BERLIN

OFFICE: POST@SO36.DE
SOUND: TON@SO36.DE
LIGHT: LICHT@SO36.DE

SO36

VENUE AND TECH SPECS

DMX Patch Stage SO36

10.10.17

DMX 1	Dimm
1	Backtruss
2	Backtruss
3	Backtruss
4	Backtruss
5	Backtruss
6	Backtruss
7	Backtruss
8	Backtruss
9	Backtruss
10	Backtruss
11	Backtruss
12	Backtruss
13	Midtruss
14	Midtruss
15	Midtruss
16	Midtruss
17	Midtruss
18	Midtruss
19	Stage Floor
20	Stage Floor
21	Stage Floor
22	Stage Floor
23	Stage Floor
24	Stage Floor
25	Mole Backtruss
26	Mole Backtruss
27	Mole Backtruss
28	Mole Backtruss
29	///
30	Security Pinspot
31	ACL
32	ACL
33	Mole Fronttruss
34	Mole Fronttruss
35	Mole Fronttruss
36	Mole Fronttruss
37	Profile Center
38	Profile Drum
39	Profile SL
40	Wash NC
41	Gasse L
42	Wash 201
43	Profile SR
44	Wash NC
45	Profile Center
46	///
47	Wash 201
48	Gasse R

DMX 1	Dimm	Info
49	Houselight	limit to 60%!!
50	Houselight	
51	Merch	
52	DJ	
53	Houselight	
54	Houselight	limit to 50%!!
55	Fan DF	
56	Fan Stage	
57	Fan Club	
58	Houselight	limit to 50%!!
59	Houselight	
60	fatal tisch	

DMX 1	FIXTURE	Mode
105	LED PAR64 CW (3Ch)	D CTO CTB SH
110	LED FRONT	R G B D SH
115	LED FRONT	R G B D SH
120	LED FRONT	R G B D SH
125	LED FRONT N/A	
130	LED DRUMS	R G B D SH
135	LED Backdrop	R G B D SH
140	LED Backdrop	R G B D SH
145	LED Backdrop	R G B D SH
150	LED Backdrop	R G B D SH

DMX 2	FIXTURE	Mode
1	High End Studio Spot 5724 Ch	
25	High End Studio Spot 5724 Ch	
49	High End Studio Spot 5724 Ch	
73	High End Studio Spot 5724 Ch	
97	High End Studio Spot 5724 Ch	
121	High End Studio Spot 5724 Ch	
241	Martin Mac Aura	14 Ch
266	Martin Mac Aura	14 Ch
291	Martin Mac Aura	14 Ch
316	Martin Mac Aura	14 Ch
341	Martin Mac Aura	14 Ch
366	Martin Mac Aura	14 Ch
391	Litecraft AT 10	8 Ch
399	Litecraft AT 10	8 Ch
407	Litecraft AT 10	8 Ch
415	Litecraft AT 10	8 Ch
423	Litecraft AT 10	8 Ch
431	Litecraft AT 10	8 Ch
439	Martin Atomic 3000	4 Ch
443	Martin Atomic 3000	4 Ch
485	Martin Atomic 3000	4 Ch
509	Fog	
510	Haze	
511	Fan	

SO36

VENUE AND TECH SPECS

Only on request:

Video:

PANASONIC PT VX 500E

XGA LCD-Projektor

Resolution: 1024×768 Pixel

Format: 4:3

Contrast ratio: 3000:1

Brightness: 5000 ANSI Lumen

Note: please bring your own adapters to VGA

Stage dimensions: 7,80m wide, 6,0m deep, 1m high, 3,7m clearance

FOH dimensions (Sound & Light): 2,0m wide, 3,0m deep, 0,3m high

Backdrop: Pipe 6m, Backtruss 8m

Venue

Height: 5m (Clearance 4,7m)

Parking in front of the Venue

Loading way : 60m, 3 steps

Electricity: 32ACEE 16A CEE for nightliners available

Merchandise

4m table, well lit – fee: a few crewshirts would be nice

Backstage

Backstage access via soundgate

lockable production office with Wifi Internetaccess

2 heated dressing rooms

2 showers / 2 toilets

Area Plan:



SO36
ORANIENSTR 190
10999 BERLIN

OFFICE: POST@SO36.DE
SOUND: TON@SO36.DE
LIGHT: LICHT@SO36.DE